



Mahidol University
Wisdom of the Land

**DOCTOR OF PHILOSOPHY
PROGRAM IN NURSING SCIENCE
(INTERNATIONAL PROGRAM)**

HANDBOOK 2024

**FACULTY OF NURSING AND
RAMATHIBODI SCHOOL OF NURSING
FACULTY OF MEDICINE RAMATHIBODI HOSPITAL**

Doctor of Philosophy Program in Nursing Science (International Program)

Academic Year 2024

1. Program Title

Doctor of Philosophy Program in Nursing Science (International Program)

2. Name of the Degree

Full name: Doctor of Philosophy Program (Nursing Science)

Abbreviation: Ph.D. (Nursing Science)

3. Responsible Units

3.1 Faculty of Nursing, Mahidol University

3.2 Ramathibodi School of Nursing, Faculty of Medicine Ramathibodi Hospital, Mahidol University

3.3 Faculty of Graduate Studies, Mahidol University

4. Mahidol University Educational Philosophy

“Administering education that focuses on learners’ achievements by means of a learning-centered approach for self-development of knowledge, abilities, and new skills.”

5. Program Learning Outcomes (PLOs)

Upon the completion of the program, the PhD graduates should possess the following achievement:

- 5.1 Perform professional code of conduct and ethics in relation to profession, research, and academic work;
- 5.2 Demonstrate mastery of in-depth knowledge in nursing science;
- 5.3 Create nursing research and innovation to impact health and well-being of the people;
- 5.4 Demonstrate leadership and teamwork skills as well as accountability to self and others;
- 5.5 Demonstrate effective skills in communication and dissemination of nursing knowledge and innovation at national and international levels.

6. Academic System

6.1 Semester system

6.2 Credits

The number of credits assigned to each subject is determined as follows:

6.2.1 The lecture or seminar consuming 15 hours per semester is equal to 1 credit hour.

6.2.2 The dissertation or independent study consuming 45 hours per semester is equal to 1 credit hour.

7. Language

English is used in the instruction, paper, and dissertation writing.

8. Duration of Study

The duration of study should not be longer than the education plan (8 semesters or 4 academic years designated in the curriculum) and must not exceed 6 academic years.

9. Registration

9.1 Students must register as full-time students.

9.2 Students must register no less than 9 credits but no more than 15 credits per regular semester, or up to the recommendation of the advisor.

10. Evaluation and Graduation Requirements

10.1 Evaluation

Student evaluation is in accordance with the rules and regulations of Mahidol University.

10.2 Graduation Requirements

10.2.1 For study Plan 1.1, a student holding a Master's degree are required to take 48 credits of dissertation and total credits for the program not less than 48 credits, with GPAX not less than 3.00 on 4.00 scale.

10.2.2 For study Plan 2.1, a student holding a Master's degree are required to take no less than 12 credits of course work and 36 credits of dissertation, total credits for the program not less than 48 credits, with GPAX not less than 3.00 on 4.00 scale;

10.2.3 Pass English Proficiency Examination; according to regulations of Faculty of Graduate Studies, Mahidol University;

10.2.4 Pass qualifying examination;

10.2.5 Participate in soft skills activities that meet the requirements of Faculty of Graduate Studies (Look at <https://graduate.mahidol.ac.th/softskills/inter/>);

- 10.2.6 Complete the dissertation and pass oral dissertation examination required for graduation according to regulations of Faculty of Graduate Studies, Mahidol University; and
- 10.2.7 For study Plan 1.1, a student must publish two papers which are related to dissertation or get the acceptance letters for publication from international standard journals. For study Plan 2.1, a student must publish at least one paper in which is related to dissertation or get the acceptance letter for publication from an international standard journal.

11. Teaching Staffs

This doctoral program is a collaborative program between Faculty of Nursing, Mahidol University and Ramathibodi School of Nursing, Faculty of Medicine Ramathibodi Hospital, Mahidol University. The teaching staffs consist of those from both institutions, as well as guest lecturers from other universities including partnership schools in other countries.

Faculty of Nursing

No.	Name/Degree	Title	Area of Research
1	Ameporn Ratinthorn Ph.D. Nursing M.S. Maternal and Newborn Nursing M.A. Counseling Psychology B.Sc. Nursing and Midwifery	Associate Professor	1. Women's work and health 2. Health of disadvantage group of women 3. Continuity of midwifery care/ Quality of maternity care
2	Apawan Nookong Ph.D. Nursing M.S.N. Pediatric Nurse Practitioner M.Sc. Nursing B.Sc. Nursing & Midwifery	Associate Professor	1. Respiratory care for children 2. Non-communicable diseases in children 3. Health promotion for early-childhood and families 4. Psychosocial care for children and families
3	Arunrat Srichantarant Ph.D. Nursing M.N.S. Nursing Administration B.Sc. Nursing & Midwifery	Associate Professor	1. Children with congenital heart disease and families 2. Psychosocial care for children with chronic illness and families 3. Pediatric palliative care and end of life care

No.	Name/Degree	Title	Area of Research
			4. Qualitative research
4	Aurawamon Sriyuktasuth D.S.N. M.Sc. Nursing B.N.	Associate Professor	1. Non-communicable diseases especially chronic kidney disease 2. Evidence-based nursing
5	Autchariya Pongkaew D.N.S. M.N.S. Adult Nursing B.N.	Associate Professor	1. Health service system 2. Cardiovascular nursing 3. Self-management support in chronic diseases
6	Nanthana Thananowan Ph.D. Nursing M.S.N. Women Health Nursing B.Sc. Nursing and Midwifery	Associate Professor	1. Intimate partner violence 2. Women's health nursing 3. Obstetrical & gynecological nursing
7	Nopporn Vongsirimas Ph.D. Nursing M.Ed. Developmental Psychology B.Sc. Nursing and Midwifery	Associate Professor	1. Mental health promotion and risk reduction in adolescent population 2. Depression in adolescent of depressed mothers
8	Phuangphet Kaesornsamut Ph.D. Nursing M.A. Counseling Psychology B.Sc. Nursing and Midwifery	Associate Professor	1. Health promotion and risk reduction in adolescent population 2. Depression in adolescent 3. Intimate partner violence 4. Individual and group counseling
9	Piyanun Limruangrong Ph.D. Nursing M.N.S. Maternal and Child Nursing Dip. in Nursing Science	Associate Professor	1. Caring in pregnant women with gestational diabetes mellitus 2. Caring in pregnant women with overweight and obesity 3. Health promotion in pregnant women
10	Piyatida Nakagasien Ph.D. Nursing M.A. Cultural Studies (Public Health Culture) B.N.S.	Associate Professor	1. Health promotion and risk reduction in child and adolescent population 2. Health system research 3. Qualitative research

No.	Name/Degree	Title	Area of Research
11	Prangtip Chayaput Ph.D. Nursing M.Sc. Adult Health Nursing M.S. Physiology LL.B. Law B.Sc. Nursing and Midwifery	Associate Professor	1. Nursing care for trauma patients 2. Nursing care for cancer patients 3. Nursing care for neurological patients 4. Critical care nursing 5. Roy Adaptation Model and nursing theories
12	Rukchanok Koshakri Ph.D. (Nursing) M.Sc. (Public Health) Cert. in Nurse Practitioner (Primary Medical Care) B.N.S.	Associate Professor	1. Chronic care 2. Diabetes mellitus 3. Quality of care
13	Somsiri Rungamornrat Ph.D. Nursing M.N.S. Maternal and Child Nursing B.N.S.	Associate Professor	1. Health promotion in early childhood 2. Nursing care for high-risk newborn
14	Sudaporn Payakkaraung Ph.D. Nursing M.N.S. Pediatric Nursing B.N.S.	Associate Professor	1. Breastfeeding 2. Newborn care 3. Pain management in children
15	Tassanee Prasopkittikun Ph.D. Nursing M.S. Parent-Child Nursing M.Sc. Public Health B.Ed. Early Childhood Education B.Sc. Nursing and Midwifery	Associate Professor	1. Parenting and child development 2. Self-efficacy 3. Scale development
16	Usavadee Asdornwised Ph.D. Nursing M.S. Teaching for Nurse Practitioner M.Sc. Medical and Surgical Nursing B.P.H	Associate Professor	1. Perioperative nursing 2. Telehealth and innovation for continuing care in surgical patients/elders 3. Venous thromboembolism prevention 4. Critical care interventions

No.	Name/Degree	Title	Area of Research
	B.Sc. Nursing and Midwifery		5. Nursing theory development 6. Cardio-vascular nursing
17	Virapun Wirojratana Ph.D. Nursing M.Sc. Gerontological Nursing M.Sc. Nursing Dip. in Nursing Science	Associate Professor	1. Health promotion in older adults with NCDs 2. Family caregiver caring for older persons with chronic illnesses 3. Long-term care and palliative care for older persons
18	Wareerat Thanoi Ph.D. Nursing M.S. Mental Health B.Sc. Nursing and Midwifery	Associate Professor	1. Emotional distress and suicide risk behaviors in adolescents 2. Psychological well-being in adolescents and early adults 3. Psychological well-being and emotional distress in adult and elderly people with NCDs
19	Wimolrat Puwarawuttipanit Ph.D. Neuroscience M.Sc. Medical - Surgical Nursing B.Sc. Nursing and Midwifery	Associate Professor	1. Chronic illness 1.1 Neurosciences nursing 1.2 Nephrology nursing 2. Infection control
20	Yajai Sitthimongkol Ph.D. Nursing Science M.S. Psychiatric Nursing M.Sc. Clinical Psychology B.Sc. Nursing	Associate Professor	1. Stress, coping and adaptation 2. Patients with severe mental illness and their family 3. Evidence-based practice 4. Mental health of migrant workers
21	Yupa Jewpattanakul Ph.D. Nursing M.N.S. Community Health Nursing B.N.S.	Associate Professor	1. Family health nursing 2. Early care 3. Community health nursing 4. Empowerment and participation 5. Health literacy
22	Atittaya Pornchaikate Au-Yeong Ph.D. Nursing M.S. Mental Health and Psychiatric Nursing	Assistant Professor	1. Adolescent mental health and sexual health 2. Depression in persons with NCD 3. Schema and cognitive processing

No.	Name/Degree	Title	Area of Research
	M.S. Mental Health B.Sc. Nursing and Midwifery		4. Mental health promotion
23	Juntima Rerkluenrit Ph.D. (Nursing) M.N.S. (Adult Nursing) Cert. in Nurse Practitioner (Primary Medical Care) B.Sc. (Nursing and Midwifery)	Assistant Professor	1. Cardiovascular nursing 2. Health promotion for relatives and patients with non-communicable diseases (NCDs) 3. Qualitative research
24	Kessiri Wongkongkam Ph.D. Nursing M.N.S. Adult Nursing B.N.S.	Assistant Professor	1. Nursing management among cardiovascular patients 2. Improve quality of life and quality of care among gastrointestinal tract patients
25	Pichitra Lekdamrongkul Ph.D. Nursing M.N.S. Adult Nursing B.N.S.	Assistant Professor	1. Hematology and oncology 2. Cancer survivorship 3. Quality of life in cancer patients 4. Quality of care
26	Rattima Sirihorachai Ph.D. Nursing M.A. Counseling Psychology B.N.S.	Assistant Professor	1. Perioperative nursing 2. Patient safety and quality improvement in healthcare
27	Sasitara Nuampa Ph.D. Nursing M.N.S. Advanced Midwifery B.N.S.	Assistant Professor	1. Infant feeding practices, breastfeeding 2. Maternal and child health
28	Sirada Kesornsri Ph.D. (Nursing) M.N.S. (Mental Health and Psychiatric Nursing) B.N.S.	Assistant Professor	1. Mental health promotion among minority groups (migrant workers) 2. Mental health promotion among adolescents
29	Sudarat Pianchob Ph.D. (Nursing) M.N.S. (Mental Health and Psychiatric Nursing)	Assistant Professor	1. Depression 2. Mental health of caregivers 3. Sense of belonging

No.	Name/Degree	Title	Area of Research
	Cert. in Gerontological Nursing B.N.S.		
30	Supapak Phetrasuwan Ph.D. Nursing M.S. Psychiatric Mental Health Nursing B.N.S.	Assistant Professor	1. Child and adolescent mental health 2. Autism spectrum disorders and other neurodevelopmental disorders 3. Mental health counseling 4. Mental health promotion
31	Thitipong Tankumpuan Ph.D. Nursing M.N.S. Adult Nursing B.N.S.	Assistant Professor	1. Cardiovascular nursing 2. Social determinants of health
32	Walailak Pumpuang Ph.D. (Nursing) M.A. (Educational Psychology and Guidance) Grad. Dip. in Mental Health (Substance Dependence and Psychiatric Disorders) Grad. Dip. in Mental Health (Cognitive Behavioral Therapy) B.N.S.	Assistant Professor	1. Child mental health / ADHD / parenting management 2. Teaching method 3. Adolescent mental health / Seeking 4. Adolescent mental health / Stress
33	Wanna Phahuwatanakorn Ph.D. Nursing M.S.N. Health Care of Women Nurse Practitioner M.Sc. Public Health B.Sc. Nursing and Midwifery	Assistant Professor	1. Postpartum care 2. Breastfeeding
34	Warunee Phligbua Ph.D. Nursing M.N.S. Adult Nursing B.N.S.	Assistant Professor	1. Oncology symptom management 2. Mind-body interventions for chronic disease self-management 3. Quality of life in cancer patients

No.	Name/Degree	Title	Area of Research
35	Weha Kasemsuk Ed.D. (Lifelong Education and Human Development) Diploma, Thai Board of Advanced Community Nurse Practitioner M.N.S. (Community Nurse Practitioner) Cert. in Gerontological Nursing B.N.S.	Assistant Professor	1. Chronic care 2. Primary/First aid care 3. Emergency care 4. Occupational health care 5. Lifelong learning
36	Natma Thongteratham Ph.D. (Nursing) M.N.S. (Adult Nursing) Cert. in Gerontological Nursing Cert. in Oncology Nursing B.N.S.	Lecturer	1. Surgical nursing 2. Cancer nursing 3. Orthopedics nursing
37	Nattaya Rattana-umpa Ph.D. (Education) M.N.S. (Nursing Education) Cert. in Renal Replacement Therapy Nurse Practitioner (Hemodialysis) B.N.S.	Lecturer	1. Chronic illness, especially chronic kidney disease 2. Nursing education
38	Sathima Suratham Ph.D. (Nursing) M.N.S. (Pediatric Nursing) Certificate of Diabetes Educator B.N.S.	Lecturer	1. Nursing care for chronic illness in children and families 2. Health promotion in diabetic patients
39	Thiwarphorn Chalernpichai Ph.D. (Nursing) M.N.S. (Maternal and Newborn Nursing) B.B.A. (Marketing) B.N.S.	Lecturer	1. Health care system 2. OB&GYN surgical care 3. Infectious diseases in pregnancy 4. Women's health in vulnerable population

Ramathibodi School of Nursing, Faculty of Medicine Ramathibodi Hospital

No.	Name/Degree	Title	Area of Research
1	Noppawan Piaseu Ph.D. Nursing M.S. Nursing Administration M.S. Nutrition B.Sc. Nursing and Midwifery	Professor	1. Nutrition and food security in urban population 2. Health promotion for prevention and control of NCDs in community 3. Health service systems
2	Bualuang Sumdaengrit Ph.D. Nursing M.S.N. Adult Nursing B.Sc. Nursing and Midwifery Certificate in Nursing Specialty in Nurse Practitioner Primary Medical Care	Associate Professor	1. Women's health 2. Women with gynecological problems and gynecologic oncology problems
3	Manee Arpanantikul Ph.D. Nursing M.Sc. Nursing M.Sc. Nutrition B.Sc. Nursing and Midwifery	Associate Professor	1. Women's health 2. Health promotion for healthy women and women with chronic conditions 3. Qualitative research
4	Natthacha Chiannilkulchai Ph.D. Nursing M.Ed. Environmental Education B.N.S.	Associate Professor	1. Nursing innovation 2. Perioperative nursing 3. Neurosurgical nursing
5	Patcharin Nintachan Ph.D. Nursing M.N.S. Mental Health and Psychiatric Nursing B.Sc. Nursing and Midwifery	Associate Professor	1. Resilience 2. Risk taking behavior 3. Mental health problems in disadvantaged youth 4. Schizophrenia
6	Phachongchit Kraithaworn Ph.D. Nursing M.Sc. Mental Health B.Sc. Nursing and Midwifery	Associate Professor	1. Community mental Health 2. Older adults' mental health 3. Health promotion 4. Chronic illness
7	Phichpraorn Youngcharoen Ph.D. Nursing M.N.S. Adult Nursing	Associate Professor	1. Pain in older adults 2. Orthopedic nursing

No.	Name/Degree	Title	Area of Research
	B.N.S.		
8	Pisamai Orathai Ph.D. Educational Research Methodology M.Ed. Developmental Psychology B.Sc. Nursing and Midwifery	Associate Professor	1. Nursing ethics 2. Quantitative research 3. Statistics
9	Poolasuk Janepanish Visudtibhan Ph.D. Nursing Science M.N.S. Nursing Education B.Sc. Nursing & Midwifery	Associate Professor	1. HIV/AIDS nursing care 2. Nursing education 3. HIV counseling
10	Sangthong Terathongkum Ph.D. Nursing M.Sc. Human Reproduction and Population Planning B.Sc. Nursing and Midwifery	Associate Professor	1. Family nurse practitioner 2. Relaxation techniques: meditation
11	Siranee Kejkornkaew Ph.D. Nursing M.N.S. Adult Nursing B.N.S.		1. Family caregivers of cancer patients 2. Quality relationship concept 3. Grounded theory 4. Qualitative study 5. Nursing education
12	Srisamorn Phumonsakul D.N.S. M.S. Critical Care Nursing B.Sc. Nursing and Midwifery	Associate Professor	1. Parental role adaptation (maternal & paternal role attainment) 2. High-risk pregnancy and midwifery 3. Research methodology 4. Scale and instrument development
13	Suchira Chaiviboontham Ph.D. Nursing M.S. Biopharmaceutical Science B.N.S.	Associate Professor	1. Palliative care nursing, oncology nursing, surgical nursing, chronic care 2. Symptom experience and management in cancer patients
14	Suparb Aree-Ue Ph.D. Nursing M.N.S. Adult Nursing	Associate Professor	1. Orthogeriatrics and rehabilitation 2. Health promotion & long-term care in older adults

No.	Name/Degree	Title	Area of Research
	B.Sc. Nursing and Midwifery		3. Innovative approaches to older care
15	Supreeda Monkong Ph.D. Gerontological Nursing M.S. Gerontological Nursing B.Sc. Nursing and Midwifery	Associate Professor	1. Gerontological nursing 2. Family caregiver 3. Critical care nursing
16	Wantana Maneesriwongul D.N.Sc. M.P.H. Biostatistics & Epidemiology B.Sc. Nursing and Midwifery	Associate Professor	1. HIV/AIDS care 2. Chronic diseases, treatment adherence and self-management 3. Instrument development and instrument translation 4. Community health
17	Apinya Siripitayakunkit Ph.D. Nursing M.Sc. Public Health B.Sc. Nursing and Midwifery Dip., Thai Board of Advanced Practice Adult and Gerontological Nursing Certificate in Nursing Specialty in Nurse Practitioner	Assistant Professor	1. Cardiovascular nursing 2. Nursing care of persons with metabolic syndrome
18	Autchareeya Patoomwan Ph.D. Nursing M.Sc. Nursing B.Sc. Nursing and Midwifery Dip., Thai Board of Advanced Practice Pediatric Nursing	Assistant Professor	1. Palliative care in children 2. Symptom management in children with cancer 3. Quality of life in children with cancer
19	Inthira Roopsawang Ph.D. Nursing M.N.S. Adult Nursing B.N.S.	Assistant Professor	1. Gerontological nursing and orthogeriatric care 2. Frailty and sarcopenia 3. Chronic illness, long-term care, and rehabilitation 4. Health outcomes; quality and safety 5. mHealth & innovative care

No.	Name/Degree	Title	Area of Research
20	Jiraporn Punyoo Ph.D. Nursing Science M.N.S. Pediatric Nursing B.N.S.	Assistant Professor	1. Pediatric critical care nursing 2. Nursing care in pediatric patients with hemodialysis
21	Jumpee Granger Ph.D. Nursing M.Sc. Health Education B.N.S.	Assistant Professor	1. Health promotion 2. Nursing education 3. Qualitative research
22	Kamonrat Kittipimpanon Dr.P.H. Public Health Nursing M.N.S. Adult Nursing B.N.S.	Assistant Professor	1. Health promotion for older adults 2. Community-based fall prevention model for older Adults 3. Fall health literacy in older adults
23	Malatee Rungruangsiripan Ph.D. Nursing M.A. Counseling Psychology B.N.S.	Assistant Professor	1. Medication adherence in schizophrenia 2. Community mental health
24	Monrudee Chokprajakchad Ph.D. Nursing M.Sc. Public Health B.N.S.	Assistant Professor	1. Health promotion for children and adolescent 2. Risk behavior prevention in adolescents 3. School health care
25	Noppawan Phinitkhajorndech Ph.D. Nursing M.Sc. Biostatistics B.N.S.	Assistant Professor	1. Nursing care for adult persons with chronic disease and critical illness 2. Health outcomes, quality of life, and measurement development (chronic kidney disease) 3. Applied statistics
26	Piyawan Pokpalagon Ph.D. Nursing M.N.S. Adult Nursing B.N.S.	Assistant Professor	1. Palliative care/ End-of-life care 2. Cancer
27	Sirirat Leelacharas Ph.D. Nursing M.S. Medical-Surgical Nursing	Assistant Professor	1. Applying the Common Sense Model of Illness Representations to acute and chronic illnesses

No.	Name/Degree	Title	Area of Research
	B.N.S.		2. Acute care nursing focusing on cardiovascular, pulmonary, and neurological nursing 3. Adult health nursing
28	Sopin Sangon Ph.D. Nursing M.S. Psychiatric-Mental Health Nursing B.N.S.	Assistant Professor	1. Depression across life span 2. Resilience and depression 3. Schizophrenia
29	Streerut Thadakant Ph.D. Nursing M.S. Midwifery M.Sc. Public Health B.Sc. Nursing and Midwifery	Assistant Professor	1. Midwifery practice 2. Midwifery profession 3. Nursing & midwifery education
30	Sumolchat Duangbubpha Ph.D. Nursing M.N.S. Adult Nursing B.Sc. (Nursing and Midwifery)	Assistant Professor	1. Critical care nursing
31	Supichaya Wangpitipanit Ph.D. Nursing Science M.N.S. Gerontological Nursing B.N.S.	Assistant Professor	1. Gerontological of women with urinary incontinence 2. Caring for the dependent older people at home 3. Innovation 4. Information, technology and digital media literacy
32	Suwatjana Noinam Ph.D. Nursing M.N.S. Pediatric Nursing B.N.S.	Assistant Professor	1. Child obesity 2. Teenage pregnancy
33	Tiraporn Junda Ph.D. Nursing M.S. Nursing B.N.S.	Assistant Professor	1. Oncology nursing 2. Palliative care 3. Symptom management 4. Qualitative method

No.	Name/Degree	Title	Area of Research
34	Tusana Thaweekoon Ph.D. Nursing M.S. Psychiatric & Mental Health Nurse Practitioner M.Sc. Nutrition B.N.S.	Assistant Professor	1. Bullying and cyberbullying in children and adolescents 2. Child and adolescent psychiatric and mental health nursing
35	Wanna Sanongdech Ph.D. Nursing M.Sc. Public Health B.N.S.	Assistant Professor	1. Occupational health
36	Wilai Napa Ph.D. Nursing Science M.N.S. Psychiatric Mental Health Nursing B.N.S.	Assistant Professor	1. Family caregiving 2. Psychiatric mental health nursing
37	Lawan Singhasai Ph.D. Nursing M.A. Developmental Psychology B.N.S.	Assistant Professor	1. Child and adolescent health promotion 2. Health problems and risky behaviors in children and adolescents 3. Obesity/ overweight and nutritional problems in children and adolescents 4. Developmental and psychological promotion in hospitalized children

12. Program Administrative Committee

The followings are the Program Administrative Committee:

12.1	Professor Emeritus Dr. Somchit Hanucharurnkul	Consultant
12.2	Associate Professor Dr. Ameporn Ratinthorn	Consultant
12.3	Associate Professor Dr. Poolsuk Janepanish Visudtibhan	Consultant
12.4	Associate Professor Dr. Tassanee Prasopkittikun	Program Chair
12.5	Assistant Professor Dr. Apinya Siripitayakunkit	Co-Program Chair
12.6	Associate Professor Dr. Sangthong Terathongkum	Committee Member

12.7 Associate Professor Dr. Supreeda Monkong	Committee Member
12.8 Associate Professor Dr. Yajai Sitthimongkol	Committee Member
12.9 Assistant Professor Dr. Thitipong Tankumpuan	Committee Member
12.10 Associate Professor Dr. Aurawamon Sriyuktasuth	Committee Member and Secretary
12.11 Associate Professor Dr. Bualuang Sumdaengrit	Committee Member and Assistant Secretary

13. Location to study

The program will be conducted mainly at:

- 13.1 Faculty of Nursing, Mahidol University at both Bangkok Noi and Salaya Campuses
- 13.2 Ramathibodi School of Nursing, Faculty of Medicine Ramathibodi Hospital,
Mahidol University at both Phayathai and Salaya Campuses

14. Library

There are various library resources and services located in Mahidol University to which the students are able to access. These libraries have various textbooks, and electronic books, journals as well as databases to facilitate academic assignments.

15. Budget

In case of study within the duration specified in the curriculum study plan of the program (i.e., 8 regular semesters), tuition fees shall be charged based on the fixed-rate tuition fees of 107,500 THB per regular semester until the completion of the curriculum study plan. For more details, please see the “Announcement of Mahidol University Subject: Fixed-Rate Tuition Fees for Postgraduate Studies For Students Enrolling Academic Year B.E. 2567 (2024) Onwards B.E. 2567 (2024)”.

16. Program Curriculum

16.1 The number of credits required for the program

Plan 1.1 At least 48 credits

Plan 2.1 At least 48 credits

16.2 Curriculum Structure

The program is set according to the Ministry of Education Announcement entitled “Standard Criteria for Graduate Studies 2015” with specified Plan 1.1 and Plan 2.1 curriculum as follows:

A. Plan 1.1: Dissertation

1) Dissertation 48 credits

Total	48	credits
B. Plan 2.1: Course work and Dissertation		
1) Required courses	10	credits
2) Elective courses no less than	2	credits
3) Dissertation	36	credits
Total	48	credits

16.3 Course Requirements

16.3.1 Plan 1.1

Credits (lecture-lab Self-Study)

RANS 898/ NSID 898 Dissertation 48(0-144-0)

16.3.2 Plan 2.1

1) Required Courses 10 credits

Credits (lecture-lab Self-Study)

RANS 609	Advanced Research Design in Nursing	2(2-0-4)
RANS 651	Advanced Statistics in Health Sciences	2(2-0-4)
NSID 681	Nursing Leadership and Health Policy	2(2-0-4)
NSID 686	Philosophy and Theory Construction in Nursing	3(3-0-6)
RANS 800	Seminar in Nursing and Health Care	1(1-0-2)

2) Elective Courses no less than 2 credits

Students select only one substantive area with 2 credits which serves their interest and basis for the dissertation.

Credits (lecture-lab Self-Study)

RANS 660	Integration of Gender to Science, Technology, Research, and Innovation for Health Sustainability	2(2-0-4)
RANS 670	Outcomes Research and Measurement	2(2-0-4)
RANS 680	Prevention and Management of Chronic Conditions	2(2-0-4)
NSID 682	Psychological Intervention for the Management of Non-Communicable Diseases	2(1-2-3)
NSID 683	Qualitative Research Methodology	2(1-2-3)
NSID 684	Innovative and Evidence-based Health Promotion	2(2-0-4)
NSID 685	Global Challenges for Non-Communicable Diseases Prevention and Control	2(2-0-4)

Students might register in any graduate courses offered at Faculty of Nursing or Ramathibodi School of Nursing, Faculty of Medicine Ramathibodi Hospital or other faculties/institutions under supervision of the academic advisor and will be considered as elective courses in order to fulfill the requirements of this program.

3) Dissertation 36 credits

Credits (lecture-lab Self-Study)

RANS 699/ NSID 699 Dissertation 36 (0-108-0)

16.4 Research Projects of the Program

Guideline for research projects of the program focuses on the following areas:

1. Health behavior and health promotion across age groups in diverse population
2. Mental health and psychotherapeutic interventions
3. Prevention and management for chronic illness
4. Social health determinants
5. Women's health

16.5 Course Code Explanation

Two first letters represent the abbreviated name of Faculty/Institute/ College.

NS = Faculty of Nursing

RA = Faculty of Medicine Ramathibodi Hospital

The third and fourth letters represent the abbreviated name of responsible units.

NS = Department of Nursing

ID = Interdepartment Courses

The first numbers (5XX and 6XX) represent postgraduate program level.

17. Study Plan

17.1 Plan 1.1*

Year	Semester 1	Semester 2
1	Qualifying Examination (QE) NSID 898/RANS 898 Dissertation 8(0-24-0) Total 8 credits	NSID 898/RANS 898 Dissertation 8(0-24-0) Total 8 credits
2	NSID 898/RANS 898 Dissertation 8(0-24-0) Total 8 credits Dissertation Proposal Exam	NSID 898/RANS 898 Dissertation 8(0-24-0) Total 8 credits
3	NSID 898/RANS 898 Dissertation 8(0-24-0) Total 8 credits	NSID 898/RANS 898 Dissertation 8(0-24-0) Total 8 credits
4	NSID 898/RANS 898 Dissertation Writing Dissertation, Writing Manuscript	NSID 898/RANS 898 Dissertation Dissertation Defense

17.2 Plan 2.1

Year	Semester 1	Semester 2
1	RANS 651 Advanced Statistics in Health Sciences 2(2-0-4) NSID 681 Nursing Leadership and Health Policy 2(2-0-4) NSID 686 Philosophy and Theory Construction in Nursing 3(3-0-6) Elective course 2(2-0-4) Total 9 credits	RANS 609 Advanced Research Design in Nursing 2(2-0-4) RANS 800 Seminar in Nursing and Health Care 1(1-0-2) Qualifying Examination (QE) NSID 699/RANS 699 Dissertation 6(0-18-0) Total 9 credits
2	NSID 699/RANS 699 Dissertation 8(0-24-0) Total 8 credits Dissertation Proposal Exam	NSID 699/RANS 699 Dissertation 8(0-24-0) Total 8 credits
3	NSID 699/RANS 699 Dissertation 8(0-24-0) Total 8 credits	NSID 699/RANS 699 Dissertation 6(0-18-0) Total 6 credits
4	NSID 699/RANS 699 Dissertation Writing Dissertation, Writing Manuscript	NSID 699/RANS 699 Dissertation Dissertation Defense

All students are encouraged to register in elective courses specific for their dissertation topics. In addition to the required minimum 48 credits (for both plans), each student is also required to complete 240 hours (for Study Plan 1.1) and 180 hours (for Study Plan 2.1) to enhance his/her research experiences by participating in such activities as working as a research assistant in the advisor's research project, attending a nursing research conference or other research/academic activities that are approved by the program committee.

18. Course Description

18.1 Required Courses

		Credits (lecture-lab Self-Study)
RANS 609	Advanced Research Design in Nursing	2(2-0-4)
	Nursing science and major paradigms in nursing research; concepts of quantitative, qualitative, and mixed-methods research designs; theoretical and conceptual framework for research; validity issues in selected advanced research designs; theory of sampling and sample size determination; measurement theory and instrument development; data collection, data management, and research ethics	
RANS 651	Advanced Statistics in Health Sciences	2(2-0-4)
	Application of multivariate statistical analyses to health sciences research with regard to research ethics; multivariate analysis of variance and covariance, repeated measure multivariate analysis of variance and covariance, generalized estimating equations, logistic regression analysis, discriminant analysis, cluster analysis, exploratory factor analysis, path analysis, analysis of structural equation modeling, multiple group analysis, and multi-level analysis; data interpretation and reporting	
NSID 681	Nursing Leadership and Health Policy	2(2-0-4)
	Analysis of health policy and healthcare system; advanced leadership skills; strategic leaders; issues and trends related to leadership in nursing profession, ethics, and a VUCA World; policy-making process; political involvement and participation in national and international health policy; strategies to shape health policy to respond to population health needs through nursing leadership	
NSID 686	Philosophy and Theory Construction in Nursing	3(3-0-6)
	Conceptualization and evolution of philosophy of science and human science, epistemology and ontology of natural science and human science; knowledge development in nursing science; process and steps of theory construction; strategies for development of concept, proposition, and theory; roles of middle-range theories and advancement of nursing science; theory testing, theory evaluation; and application of theories for nursing profession development	
RANS 800	Seminar in Nursing and Health Care	1(1-0-2)
	Integration and synthesis of evidence to identify the issues and trends in contemporary nursing and health care; development of research theme and recommendations	

for changes of policy, education, and clinical practice to improve health and well-being of the selected populations

18.2 Elective Courses

	Credits (lecture-lab Self-Study)
<p>RANS 660 Integration of Gender to Science, Technology, Research, and Innovation for Health Sustainability</p> <p>Philosophical, theoretical, and scientific foundation of gender and health; methodological approaches to gender and health research; the linkage of technology, research, and innovation related to contemporary gender health issues across life span and cultural diversity; research and innovation based on advance scientific knowledge and technology across interdisciplinary for achieving sustainable health; presentation of research or innovation ideas for further study in selected research topic of interest regarding gender and health</p>	2(2-0-4)
<p>RANS 670 Outcomes Research and Measurement</p> <p>Outcomes research and related theories; outcomes management for quality improvement; outcomes research designs; methods for studying outcomes in clients and health; outcome measurements and issues; outcome measures for the efficiency and effectiveness of nursing and health care</p>	2(2-0-4)
<p>RANS 680 Prevention and Management of Chronic Conditions</p> <p>Health policies, chronic care system, concepts, theories, strategies and approaches underpinning the prevention and management of chronic conditions in individuals and groups across lifespan; models of care for chronic illness; an interdisciplinary and multidisciplinary research targeting the prevention and management of chronic health problems</p>	2(2-0-4)
<p>NSID 682 Psychological Intervention for the Management of Non-Communicable Diseases</p> <p>Theoretical concepts and research related to relationship between psychological problems and non-communicable diseases; predicting factors of psychological problems in clients with non-communicable diseases and their families; tools measuring psychological problems associated with non-communicable diseases; evidence-based psychological interventions effective in management of non-communicable diseases; practicing skills used in psychological</p>	2(1-2-3)

interventions; development of psychological intervention project for clients with non-communicable diseases and their families

NSID 683 Qualitative Research Methodology 2(1-2-3)

Designing a qualitative research proposal to explore a phenomenon of interest; training for conducting qualitative research, collecting and analyzing qualitative data with quality and ethics; use of computer programs in qualitative research; writing a qualitative research report

NSID 684 Innovative and Evidence-based Health Promotion 2(2-0-4)

Application of related theories, principles and policies to create innovative and evidence-based health promotion programs for individuals, families, and communities; application and appraisal of approaches in health promotion actions with considerations of culture and sustainability

NSID 685 Global Challenges for Non-Communicable Diseases 2(2-0-4)

Prevention and Control

The current state of the science in non-communicable diseases prevention and control, including risk factor reduction, case management, general health promotion; multi-disciplinary approaches within complex health systems, challenges of non-communicable disease prevention and control at national and global levels; synthesis, integration and application of skills and competencies to strengthen the disease prevention and control interventions at all determinants of health

NSID 567/RANS 669 Selected Topic in Nursing 2(2-0-4)

Selected nursing issues in caring for patients with chronic illness, health promotion, health system, and nursing system

18.3 Dissertation

Credits (lecture-lab Self-Study)

RANS 898/NSID 898 Dissertation* 48(0-144-0)

Identifying research proposals; conducting research with research ethics; data collection, analysis, interpretation of results and report results in terms of dissertations; presenting and publishing research in international peer-reviewed journals under supervision of advisor

* Code for Study Plan 1.1

Identifying research proposals; conducting research with research ethics; data collection, analysis, interpretation of results and report results in terms of dissertations; presenting and publishing research in international peer-reviewed journals under supervision of advisor

* Code for Study Plan 2.1

19. Grading System

Grades given in each course are based on student's performance in the final examination, tests, essays and reports, presentations and other forms of classroom participation, assignments, and laboratory exercises, although not all these elements may be present in each course. Students will not be given any grade for the course nor be allowed to sit for the examination of that course if their names are not on the class enrollment list.

<i>Letter Grades</i>	<i>Definitions</i>
A	Excellent
B+	Very Good
B	Good
C+	Fairly Good
C	Fair
D+	Poor
D	Very Poor
F	Fail
<i>Other Designations</i>	<i>Definitions</i>
S	Satisfactory
U	Unsatisfactory
I	Incomplete
P	In Progress
W	Withdrawal
AU	Audit
X	No Report

The audited (AU) designation will be assigned when an auditing student has completed, to satisfaction of the instructor, any conditions established at registration as an auditor.

An incomplete (I) grade is used when an exam is not taken, or work is delayed/incomplete due to a certain reason, such as a medical problem. The grade I must be converted to a regular grade under three options: (1) the student must take re-exam or submit the extra assignment within one month after being informed the grade; (2) the student must complete the extra assignment within the next semester; (3) the student has to re-take the course as soon as the course is available and the registration for the course is not required.

The withdrawal without penalty (W) grade is given when a student withdraws from a course after the “add-drop” period and prior to the prescribed deadline for course withdrawal.

Grade Requirements

For all postgraduate programs, the average course grade obtained for satisfying degree requirements must at least be “B” for core courses and required courses and at least be “C” for elective courses. However, the average grade points for graduation must be at least 3.00.

20. Qualifying Examination

Purpose

The qualifying examination (QE) aims to evaluate a doctoral student’s capability in critically analyzing and synthesizing knowledge relevant to the discipline of nursing and research methodology, as well as a scholarly inquiry about the area of the student’s interest. The examination includes both written and oral components. The program will announce the procedures and timeline as per the Administrative Program Committee's consideration when the coursework finishes. The student should demonstrate sufficient expertise in the theoretical and methodological issues related to the problem as a basis to pursue his/her research. The specific purposes of the examination are to move to the candidacy, to begin the preliminary work on the dissertation, and to provide students the opportunity to engage in scholarly discourse with the faculty and obtain expert guidance.

Timeframe & Registration

Study Plan 1.1: a doctoral student is eligible to take the QE in the first semester.

Study Plan 2.1: a doctoral student is eligible to take the QE after completion of the course works; and the student must have all incomplete courses cleared from his/her record to take the QE.

The qualifying examination, both written and oral components, for all students in cohort 2024 is tentatively scheduled in June, 2025. The Ph.D. qualifying examination schedule and instructions to complete the examination will be announced further.

All students are required to register for QE in the semester that they are expected to take the QE. Upon the approval from a registrar of Faculty of Graduate Studies, the students must submit a form of GR 35 QUALIFYING EXAMINATION AND COMMITTEE to the Faculty of Graduate Studies within 15 working days before the examination date.

Evaluation

1. A doctoral student will pass the QE when he/she demonstrates his/her knowledge, ability to analyze, solve the problem, and apply knowledge to design research systematically, which reflects the student's readiness to develop his/her future research.

2. If a student fails the QE, he/she will have one more chance for re-examination as scheduled by the program. A student who fails the QE for the second time will be dismissed from the program. However, according to the Mahidol University Regulations for Graduate studies 2020, he/she may be allowed to change to a master's degree program in nursing or related fields with the approval of the Administrative Program Committee of both programs and Dean of Faculty of Graduate Studies.

21. Dissertation

The website of the Faculty of Graduate Studies is the main source of information on dissertation regulations. Please visit <https://graduate.mahidol.ac.th/thesis/index-en.php>

Guidelines for Dissertation Planning

After becoming a doctoral candidate, the student will be assigned a dissertation proposal advisor. When the student is ready for the dissertation proposal exam, his/her advisor will propose the committee membership for oral dissertation proposal defense to the Administrative Program Committee for approval.

After passing the dissertation proposal defense, the student will be assigned a dissertation advisory committee. The student works closely with the committee members to conduct his/her dissertation. When the oral defense is scheduled, students should inform the Office of the Doctoral Program so that an announcement of the date, time and topic can be made

The Assessment and Report of a Student's Progress of Dissertation

After students register for the dissertation credits in every semester, all students must report their dissertation progress at the end of each semester by reporting their progress in the GR.42 (The Report and Assessment of a Student's Progress and Research Performance for Thesis) and the Thesis Advisory Committee will check online for assessing student's progress in the

research performance. The evaluation for the research performance will be assessed with one of the following letter grade as follows:

"S" (Satisfactory) means the progress of the research performance is considered to be satisfactory.

"P" (in Progress) means the research is in the process of being performed, but cannot be judged as being either satisfactory or unsatisfactory.

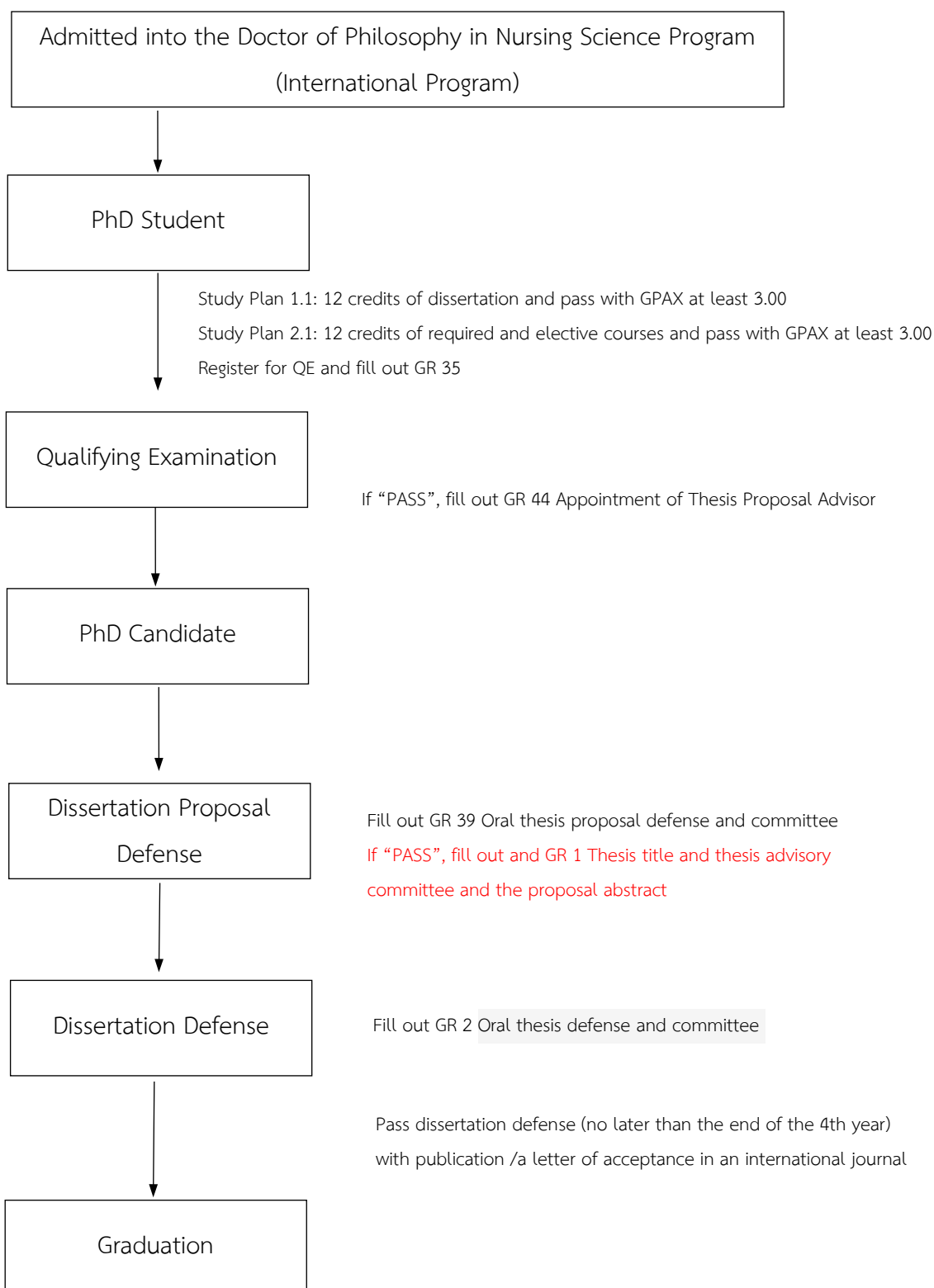
"U" (Unsatisfactory) means the progress of the research performance is considered to be unsatisfactory, characterized by one of the following cases:

- The student registered for the thesis or thematic paper in that semester but still has not prepared the proposal of a thesis or thematic paper.
- The student did not perform the research according to the research plan.

If a student receives the "U" rating for two consecutive semesters or the "P" symbol in four consecutive semesters, the thesis major advisor and the Program Director should consider the problems and solve them, then report to the Dean of the Faculty of Graduate Studies.

The complete GR.42 online with the thesis advisory committee's signatures will be sent to the program director to acknowledge the evaluation of student's thesis progress and this letter grade will be submitted to Faculty of Graduate Studies. If students do not complete the GR.42 form in the online system, they will have no grade on the transcript. For more information, please look at <https://graduate.mahidol.ac.th/thesis/report-en.php>

Steps of Students Progress in the Program



22. Academic Advisor

An academic advisor is assigned by the Program Chair in consultation with the Doctoral Program Committee. Every effort is made to “match” the student with an advisor whose research and clinical interests are similar to those of the student. Also, an effort is made to consider faculty workloads, so that advisement load is well distributed.

Most students keep the same academic advisor throughout their coursework. However, if a student should have a reason to request a change of advisor, this may be done in writing to the Program Chair, providing a justification for the request.

The advisor helps the student to plan initial coursework. By the time the student is ready to take the qualifying examination, the role of the advisor is less active and the student’s research advisors begin to play a major role.

Role of Academic Advisor (Tentative Dissertation Advisor)

Academic advisors contribute to their students’ planning in the following ways:

- Be a primary faculty contact person for the student;
- Provide expertise in content areas related to student interests;
- Be an information source for program planning;
- Advise on professional development matters and career counseling.

23. Partnership Schools

This program has collaboration with many institutions in foreign countries as partnership schools. The students may request to visit one of our partnership schools with financial support from the students themselves or their own institutions. The duration of the study visit depends on an agreement of both parties; however, a period of six to twelve months is preferable. The objectives of the study visit at the partnership schools will be as follows:

1. Developing their dissertation proposal.
2. Attending some courses, which will help students expand their conceptualization in conducting their dissertation.
3. Helping their mentors/preceptors (if appropriate) in any phases of the research project to gain experience in research practicum.

However, the plan of study in the partnership school will be established in collaboration between the faculties of two institutions, that is, Mahidol University (Faculty of Nursing and Ramathibodi School of Nursing, Faculty of Medicine Ramathibodi Hospital) and the partnership school, which will also serve on the dissertation committee.

The current partnership schools include:

Asia

1. Peking Union Medical College
2. The University of Hong Kong
3. Kaohsiung Medical University
4. National Taiwan University
5. National Cheng Kung University
6. Universitas Indonesia
7. Universitas Gadjah Mada
8. Huazhong University of Science and Technology
9. Osaka Metropolitan University
10. St. Luke's International University

Australia

1. University of Wollongong
2. University of Technology Sydney
3. Deakin University

North America

1. University of Michigan
2. Johns Hopkins University
3. University of Pennsylvania
4. The University of North Carolina at Chapel Hill
5. University of Illinois (Chicago)
6. Oregon Health and Science University
7. University of Massachusetts Amherst
8. University of Washington
9. University of Minnesota
10. Columbia University
11. University of California, Davis

24. Student appeal

If students question grading or any other concerns, they can appeal by meeting in person with the Program Chair or Dean of the Faculty of Graduate Studies. Students can also appeal by putting their messages in the appeal box available in the study buildings. In addition, the appeal procedure can be done online through the *Faculty of Graduate Studies website*:

<http://www.grad.mahidol.ac.th/grad/complain/HelpLogin.php?lang=th>

All appeals are kept confidential and anonymous.

25. Professional and Personal Skills Development (Soft skills)

Professional and Personal Skills Development or Soft skills are important for becoming successful graduates both in work and personal life. The graduate students at Mahidol University are required to undertake skills development activities. There are six skills as follows:

1. Health Literacy Skills
2. Entrepreneurial Literacy Skills
3. Communication and Language Skills
4. Creative and Innovative Skills
5. Digital Literacy Skills
6. Leaderships and Management Skills

Soft skills that students undertake must cover four skills and must not be less than 12 hours. Students must spend at least 3 hours for each skill. Please visit <https://graduate.mahidol.ac.th/softskills/inter/>

26. Research Experience

Each student is required to complete at least 180 hours of research experience before the dissertation defense. The purpose of the research experience is to develop student research skills with a broad range of activities that create a community of scholars among participating students. Research experience varies and may include any of the following activities:

1. Practicing as a research assistant for faculty's research project.
2. Participating in the doctoral forum held by any institute.
3. Participating in the research seminar held by the program.
4. Attending any of the following workshops/trainings:
 - 4.1 Research methodology or research instruments.
 - 4.2 Ethical conduct in human research.

4.3 Basic good clinical practice for research involving human subjects.

4.4 Academic or research writing workshop.

5. Participating in academic conferences related to health and research.

Any other activities may be considered by the Program Administrative Committee.

Students must report their research activities and hours by recording them in the paper form. An advisor/ research mentor must sign the form, indicating the research experience of the student has been met. A completed form of 180 hours of research experience must be submitted to the PhD Director.

27. Guideline for Writing Assignments

1. The Use of AI and AI-assisted Technologies in the Writing Process

If you use AI and AI-assisted technologies in the writing process of assignments, examinations, and dissertations, **you should only use these technologies to improve readability and language, not use them to write the work for you.** You must disclose the use of AI and AI-assisted technologies in the writing process by adding a statement of declaration at the end of your work as follows:

Declaration of generative AI and AI-assisted technologies in the writing process:

During the preparation of this.....[assignment/examination/dissertation]....., I used [NAME TOOL/SERVICE]..... in order to..... [REASON]..... After using this tool/service, I reviewed and edited the content as needed and took full responsibility for the content of the report.

2. The Use of Turnitin

After completing writing assignments, including written assignments, papers, written qualifying examinations, dissertation proposals, and dissertation reports, a report of similarity using the Turnitin Program must be attached to a writing assignment. A similarity index of less than 20% is preferable.

Office of Doctoral Program

During the academic year 2022-2025, the responsible persons of the program are:

1. Tassanee Prasopkittikun, Ph.D., RN.
Associate Professor and Program Chair
Faculty of Nursing, Mahidol University
Phone: 0-2419-7466-80 Ext. 1861, 1863
E-mail: tassanee.pra@mahidol.ac.th
2. Apinya Siripitayakunkit, Ph.D., RN.
Assistant Professor and Program Co-Chair
Ramathibodi School of Nursing, Faculty of Medicine Ramathibodi Hospital,
Mahidol University
Phone: 0-2201-2018
E-mail: apinya.sii@mahidol.edu
3. Aurawamon Sriyuktasuth, DSN, RN
Associate Professor and Program Secretary
Faculty of Nursing, Mahidol University
Phone: 0-2419-7466-80 Ext. 1951
E-mail: aurawamon.sri@mahidol.ac.th
4. Miss Nutthacha Palang
Education Management Officer
Faculty of Nursing, Mahidol University, Bangkok Noi, 3rd floor
Phone: 0-2441-5333 Ext. 2542, 2543
E-mail: nutthacha.pal@mahidol.ac.th
5. Miss Sunisa Buaprasert
Education Management Officer
Ramathibodi School of Nursing, Faculty of Medicine Ramathibodi Hospital,
Mahidol University
Phone: 0-2201-2174
E-mail: sunisa.bup@mahidol.edu

Important Information of Offices

Faculty of Nursing, Mahidol University

1. 2 Wang Lang Road, Bangkok Noi, Bangkok 10700, Thailand.

Tel: 0-2419-7466 – 80 Ext. 1411, 1413

Fax: 0-2412-8415

2. 999 Phuttamonthon 4 Road, Salaya,
Nakhon Pathom 73170, Thailand.

Tel: 0-2441-5033 Ext. 2542, 2543

Fax: 0-2441-5397

Website: <http://www.ns.mahidol.ac.th>

Ramathibodi School of Nursing, Faculty of Medicine Ramathibodi Hospital, Mahidol University

270 Rama VI Road, Ratchathewi, Bangkok 10400, Thailand.

Tel: 0-2201-2174

Fax: 0-2201-2858

Website: <https://med.mahidol.ac.th/nursing/en/Academic/Doctor-Program-Inter>

Faculty of Graduate Studies, Mahidol University

Graduate Studies Building

25/25 Phuttamonthon 4 Road, Salaya,

Nakhon Pathom 73170, Thailand.

Tel: 0-2441-4125

Website: <http://www.grad.mahidol.ac.th/en/>

Mahidol University Services

Shuttle bus

Mahidol University provides a shuttle bus service for staff and students between its Salaya, Phayathai and Bangkok Noi Campuses. The service is free of charge.

Salaya Tram Service

Salaya campus is the location more than 30 Offices/Centers/Faculties/Colleges. Thus, it hosts diverse student activities. Since commuting on campus is very high, the university plans to develop and improve the road system as well as public transportation system for the students and personnel. The transportation should be effective, unique, and appropriate for the surroundings. With these reasons, the university plans on-campus trolleys that will service inside the Salaya campus. A total of 16 trolleys are available and are divided into 4 routes: Route 1 (green), route 2 (blue), route 3 (red), and route 4 (yellow).

More information: <https://mahidol.ac.th/th/map-of-all-route/>

Security Office

The safety and well-being of our students is our top priority. Our professional safety services units are dedicated to your welfare, 24 hours a day, 7 days a week. We provide security across all of the University's campus areas. We are the first point of contact, providing advice, liaison and assistance in the following areas:

- Contact:
1. Mobile Phone Application: Salaya Bla Bla (Android and IOS)
 2. Call us on 0-2441-4400 for 24 hours.
 3. Security Office at Multipurpose sports arena (opposite College of Sport Science and Technology)

More information: <https://mahidol.ac.th/services/>

Scan here:



Appendix



Mahidol University

Announcement

Doctor of Philosophy Program in Nursing Science

(International Program)

Ramathibodi School of Nursing, Faculty of Medicine Ramathibodi Hospital and
Faculty of Nursing

Subject: Hours and Activities Required for Research Experience

The Doctor of Philosophy Program in Nursing aims to develop doctoral students' research skills with a broad range of activities that create a community of scholars among participating students. According to the Program Administrative Committee meeting on May 24, 2019, the announcement on the subject "Hours and Activities Required for Research Experience" dated November 16, 2016 has been cancelled.

Currently, each student is required to complete at least 180 hours of the research experience that will include any of the following activities:

1. Practice as a research assistant for faculty's research project;
2. Participate in the doctoral forum held by any institute;
3. Participate in the research seminar held by the program;
4. Attend any of following workshops/trainings;
 - a. research methodology or research instruments,
 - b. ethical conduct in human research,
 - c. basic good clinical practice for research involving human subjects,
 - d. academic or research writing workshop;
5. Participate in academic conferences related to health and research.

Any other out-of-class activities not mentioned above may be considered by the Program Administrative Committee.

All students of cohorts 2014 onwards must complete 180 hours of research experience before their dissertation defense.

Date of Announcement: June 7, 2019

A handwritten signature in blue ink, reading "Porntip Malathum".

(Assistant Professor Dr. Porntip Malathum)

Program Chair, Doctor of Philosophy Program in Nursing Science
(International Program)

Doctor of Philosophy Program in Nursing Science
(International Program)

Record of Research Experience

Study plan type 1.1: 240 hours required

Study plan type 2.1: 180 hours required

Student's Name Code

Date	Hour	Activity	Venue	Endorser
Totalhours				

Mahidol University
 Doctor of Philosophy Program in Nursing Science
 (International Program)
 Group 24, Year 2024

No	Student's ID	Student's Name	Contact Email	Email for MS Teams**
1	6736019 NRNS/D	Miss YAQI GUAN	blair0825@126.com	6736019@nursingmu.org
2	6736338 NRNS/D	Miss JIRAKORN KUNTUBTIM	Jirakorn.k@stin.ac.th	6736338@nursingmu.org
3	6736339 NRNS/D	Miss PANISA BOONYARATKALIN	Panisa.b@stin.ac.th	6736339@nursingmu.org
4	6736522 NRNS/D	Miss CHUTIMA JIRATHIKRENGKRAI	Chutima.jirathi@gmail.com	6736522@nursingmu.org
5	6736523 NRNS/D	Miss MONRUDEE PETLAMUL	nu_dee_j@hotmail.com	6736523@nursingmu.org
6	6736524 NRNS/D	Miss THIPAWAN SOMJIT	s.thipawan@bcnu.ac.th	6736524@nursingmu.org
7	6736525 NRNS/D	Miss PAWINTRA MANADEE	pawintra.m@pi.ac.th	6736525@nursingmu.org
8	6736526 NRNS/D	Miss BENJAPORN THITIYANVIROJ	benjaporn.t@bcnkk.ac.th	6736526@nursingmu.org
9	6737759 NRNS/D	MISS DANSHAN GAO	183317849@qq.com	6737759@nursingmu.org
10	6738263 NRNS/D	Miss WAEWDAO KAMKHIEO	waewdao.kam@mahidol.edu	6738263@nursingmu.org
11	6738264 NRNS/D	ASST.PROF. PARANEE ANUSONTHI	anusonthi.paranee@gmail.com	6738264@nursingmu.org
12*	6638033 NRNS/D	Miss SIRAWAN KARUNA	sirawan.karu@gmail.com	nrns6638033@nursingmu.org
13*	6638035 NRNS/D	Miss KANNIKA SAENGPRAJONG	jane.kannika.saeng@gmail.com	nrns6638035@nursingmu.org
14*	6638036 NRNS/D	Miss SINEENART NAKSRI	sineenart12@gmail.com	nrns6638036@nursingmu.org

* Enter the Program in the second semester academic year 2023

** Students must use password: Nsmu+m67 for logging in at the first time. The students should not change the password, so that the IT technician can be of assistance when any problem occur



ประกาศมหาวิทยาลัยมหิดล
เรื่อง อัตราค่าธรรมเนียมการศึกษาแบบเหมาจ่ายระดับบัณฑิตศึกษา
สำหรับนักศึกษาที่เข้าศึกษาตั้งแต่ปีการศึกษา ๒๕๖๗ เป็นต้นไป
พ.ศ. ๒๕๖๗

.....

เพื่อให้การลงทะเบียนและการชำระค่าธรรมเนียมการศึกษาระดับบัณฑิตศึกษา มหาวิทยาลัยมหิดล ดำเนินไปด้วยความเรียบร้อยเหมาะสม

อาศัยอำนาจตามความในข้อ ๑๑ ของข้อบังคับมหาวิทยาลัยมหิดล ว่าด้วยการบริหารงบประมาณ และการเงิน พ.ศ. ๒๕๕๑ และที่แก้ไขเพิ่มเติม ประกอบกับมติที่ประชุมคณะกรรมการกำหนดอัตราการจัดเก็บและการจัดสรรค่าธรรมเนียมการศึกษา ครั้งที่ ๑/๒๕๖๗ เมื่อวันที่ ๒๙ กันยายน พ.ศ. ๒๕๖๖ และครั้งที่ ๒/๒๕๖๗ เมื่อวันที่ ๘ ธันวาคม พ.ศ. ๒๕๖๖ อธิการบดีจึงกำหนดหลักเกณฑ์และอัตราการจัดเก็บค่าธรรมเนียมการศึกษาแบบเหมาจ่ายระดับบัณฑิตศึกษา มหาวิทยาลัยมหิดล ไว้ดังนี้

ข้อ ๑ ประกาศนี้ให้ใช้บังคับกับการจัดเก็บค่าธรรมเนียมการศึกษาแบบเหมาจ่ายระดับบัณฑิตศึกษา ของมหาวิทยาลัยมหิดล สำหรับนักศึกษาที่เข้าศึกษาตั้งแต่ปีการศึกษา ๒๕๖๗ เป็นต้นไป ยกเว้นหลักสูตรของวิทยาลัยการจัดการ หลักสูตรของวิทยาลัยนานาชาติ หลักสูตรประกาศนียบัตรบัณฑิตชั้นสูง สาขาวิทยาศาสตร์ การแพทย์คลินิกของคณะแพทยศาสตร์ศิริราชพยาบาล คณะแพทยศาสตร์โรงพยาบาลรามาธิบดี และวิทยาลัย แพทยศาสตร์พระมงกุฎเกล้า และหลักสูตรของสถาบันวิจัยวิทยาศาสตร์ในกำกับกระทรวงการอุดมศึกษา วิทยาศาสตร์ วิจัยและนวัตกรรม (สถาบันสมทบของมหาวิทยาลัยมหิดล)

ข้อ ๒ ค่าธรรมเนียมการศึกษาแบบเหมาจ่ายในภาคการศึกษาปกติ (ภาคต้นและภาคปลาย) ให้จัดเก็บจากนักศึกษาที่ลงทะเบียนเรียน หรือขอสอบวิทยานิพนธ์ สารนิพนธ์ หรือการค้นคว้าอิสระ แล้วแต่กรณี ในภาคการศึกษาปกติ ตามหลักเกณฑ์ดังนี้

๒.๑ กรณีที่เป็นการศึกษาตามระยะเวลาการศึกษาที่กำหนดไว้ในแผนการศึกษาของหลักสูตร ให้จัดเก็บตามอัตราค่าธรรมเนียมการศึกษาแบบเหมาจ่ายของแต่ละหลักสูตร โดยจัดเก็บทุกภาคการศึกษาปกติ จนครบระยะเวลาการศึกษาตามแผนการศึกษา

๒.๒ กรณีที่เป็นการศึกษาเกินระยะเวลาการศึกษาที่กำหนดไว้ในแผนการศึกษาของหลักสูตร แต่ไม่เกินระยะเวลาการศึกษาสูงสุดของหลักสูตร และยังไม่สามารถสอบวิทยานิพนธ์ สารนิพนธ์ หรือการค้นคว้าอิสระ แล้วแต่กรณี ให้มีผลผ่าน ให้จัดเก็บดังนี้

(๑) การลงทะเบียนวิทยานิพนธ์ สารนิพนธ์ หรือการค้นคว้าอิสระ แล้วแต่กรณี โดยไม่มีการลงทะเบียนรายวิชา หรือมีการลงทะเบียนรายวิชาเพื่อให้ครบตามโครงสร้างหลักสูตร ให้จัดเก็บในอัตรา ภาคการศึกษาละ ๑๐,๐๐๐ บาท โดยจัดเก็บทุกภาคการศึกษาปกติ จนถึงภาคการศึกษาที่นักศึกษาสอบวิทยานิพนธ์ สารนิพนธ์ หรือการค้นคว้าอิสระ แล้วแต่กรณี ให้มีผลผ่าน หรือจนครบระยะเวลาการศึกษาสูงสุดของหลักสูตร แล้วแต่เวลาใดจะเกิดขึ้นก่อน

(๒) การลงทะเบียนเรียนรายวิชาเพิ่มเติมจากแผนการศึกษา และหรือเพิ่มเติมหลังจากเรียนรายวิชาครบตามโครงสร้างหลักสูตรแล้ว ไม่ว่าจะมีการลงทะเบียนวิทยานิพนธ์ สารนิพนธ์ หรือการค้นคว้าอิสระแล้วแต่กรณี หรือไม่ก็ตาม ให้จัดเก็บตามอัตราค่าธรรมเนียมการศึกษาแบบเหมาจ่ายของแต่ละหลักสูตร โดยจัดเก็บทุกภาคการศึกษาปกติ จนถึงภาคการศึกษาที่นักศึกษาสอบวิทยานิพนธ์ สารนิพนธ์ หรือการค้นคว้าอิสระ แล้วแต่กรณี ให้มีผลผ่าน หรือจนครบระยะเวลาการศึกษาสูงสุดของหลักสูตร แล้วแต่เวลาใดจะเกิดขึ้นก่อน

๒.๓ กรณีที่นักศึกษาได้รับอนุมัติให้ศึกษาเกินระยะเวลาการศึกษาสูงสุดของหลักสูตร ให้จัดเก็บตามอัตราค่าธรรมเนียมการศึกษาแบบเหมาจ่ายของแต่ละหลักสูตร โดยจัดเก็บทุกภาคการศึกษาปกติ จนถึงภาคการศึกษาที่นักศึกษาสอบวิทยานิพนธ์ สารนิพนธ์ หรือการค้นคว้าอิสระ แล้วแต่กรณี ให้มีผลผ่าน

๒.๔ กรณีที่เป็นการศึกษารายวิชาครบตามโครงสร้างของหลักสูตร และสอบวิทยานิพนธ์ สารนิพนธ์ หรือการค้นคว้าอิสระ แล้วแต่กรณี ให้มีผลผ่านแล้ว แต่อยู่ระหว่างดำเนินการเผยแพร่ผลงานวิทยานิพนธ์ สารนิพนธ์ หรือการค้นคว้าอิสระ แล้วแต่กรณี เพื่อขอสำเร็จการศึกษา ให้จัดเก็บในอัตราภาคการศึกษาละ ๖,๕๐๐ บาท โดยจัดเก็บทุกภาคการศึกษาปกติ จนถึงภาคการศึกษาที่บัณฑิตวิทยาลัยเสนอสภามหาวิทยาลัยมหิดลเพื่ออนุมัติปริญญา

ข้อ ๓ ค่าธรรมเนียมการศึกษาแบบเหมาจ่ายในภาคฤดูร้อน ให้จัดเก็บจากนักศึกษาที่ลงทะเบียนเรียน หรือขอสอบวิทยานิพนธ์ สารนิพนธ์ หรือการค้นคว้าอิสระ แล้วแต่กรณี ในภาคฤดูร้อน ตามหลักเกณฑ์ดังนี้

๓.๑ กรณีที่เป็นการศึกษาตามระยะเวลาการศึกษาที่กำหนดไว้ในแผนการศึกษาของหลักสูตร ให้จัดเก็บในอัตราร้อยละ ๕๐ ของอัตราค่าธรรมเนียมการศึกษาแบบเหมาจ่ายของแต่ละหลักสูตร

๓.๒ กรณีที่เป็นการศึกษาเกินระยะเวลาการศึกษาที่กำหนดไว้ในแผนการศึกษาของหลักสูตร แต่ไม่เกินระยะเวลาการศึกษาสูงสุดของหลักสูตร และยังไม่สามารถสอบวิทยานิพนธ์ สารนิพนธ์ หรือการค้นคว้าอิสระ แล้วแต่กรณี ให้มีผลผ่าน ให้จัดเก็บดังนี้

(๑) การลงทะเบียนวิทยานิพนธ์ สารนิพนธ์ หรือการค้นคว้าอิสระ แล้วแต่กรณี โดยไม่มีการลงทะเบียนรายวิชา หรือมีการลงทะเบียนรายวิชาเพื่อให้ครบตามโครงสร้างหลักสูตร ให้จัดเก็บในอัตราภาคการศึกษาละ ๑๐,๐๐๐ บาท

(๒) การลงทะเบียนเรียนรายวิชาเพิ่มเติมจากแผนการศึกษา หรือเพิ่มเติมหลังจากเรียนรายวิชาครบตามโครงสร้างหลักสูตรแล้ว ไม่ว่าจะมีการลงทะเบียนวิทยานิพนธ์ สารนิพนธ์ หรือการค้นคว้าอิสระแล้วแต่กรณี หรือไม่ก็ตาม ให้จัดเก็บในอัตราร้อยละ ๕๐ ของอัตราค่าธรรมเนียมการศึกษาแบบเหมาจ่ายของแต่ละหลักสูตร

๓.๓ กรณีที่นักศึกษาได้รับอนุมัติให้ศึกษาเกินระยะเวลาการศึกษาสูงสุดของหลักสูตร ให้จัดเก็บในอัตราร้อยละ ๕๐ ของอัตราค่าธรรมเนียมการศึกษาแบบเหมาจ่ายของแต่ละหลักสูตร

๓.๔ กรณีนักศึกษาใหม่ที่หลักสูตรกำหนดให้ลงทะเบียนเรียนเพื่อศึกษาบางรายวิชาในภาคฤดูร้อน ก่อนเปิดภาคต้นของปีการศึกษาแรก ให้จัดเก็บในอัตราร้อยละ ๕๐ ของอัตราค่าธรรมเนียมการศึกษาแบบเหมาจ่ายของแต่ละหลักสูตร

ข้อ ๔ ค่าธรรมเนียมอื่น ได้แก่ ค่าวิจัยและหรือค่าอุปกรณ์พิเศษ และค่าธรรมเนียมการศึกษาดูงาน ให้จัดเก็บตามอัตราค่าธรรมเนียมอื่นของแต่ละหลักสูตร ทั้งนี้ ประธานหลักสูตรอาจพิจารณาให้แบ่งชำระ ลดหย่อน หรือยกเว้นการชำระค่าธรรมเนียมอื่นได้ ตามหลักเกณฑ์ดังนี้

๔.๑ กรณีนักศึกษาไม่สามารถชำระค่าธรรมเนียมอื่นเต็มจำนวนได้ในคราวเดียว ให้ประธานหลักสูตรพิจารณาอนุมัติการแบ่งชำระ เป็นรายกรณี

๔.๒ กรณีนักศึกษามีได้รับทุนการศึกษาจากแหล่งทุนใด ๆ หรือได้รับทุนในจำนวนเงินที่ไม่เพียงพอสำหรับค่าธรรมเนียมอื่น ให้ประธานหลักสูตรพิจารณาอนุมัติการลดหย่อนหรือยกเว้นการชำระค่าธรรมเนียมอื่น เป็นรายกรณี

ข้อ ๕ ค่าประกันสุขภาพสำหรับนักศึกษาต่างชาติ (Health Insurance) ให้จัดเก็บในอัตราปีการศึกษาละ ๓,๕๐๐ บาท จนถึงปีการศึกษาที่บัณฑิตวิทยาลัยเสนอสภามหาวิทยาลัยมหิดลเพื่ออนุมัติปริญญา

ข้อ ๖ กรณีนักศึกษาที่ได้รับอนุมัติให้ลาพักการศึกษาในภาคการศึกษาใด ให้ชำระค่าธรรมเนียมการขอลาพักการศึกษา ตามประกาศบัณฑิตวิทยาลัย มหาวิทยาลัยมหิดล เรื่อง อัตราการเก็บค่าใช้จ่ายอื่น ๆ สำหรับนักศึกษามหาวิทยาลัย และให้ลงทะเบียนเพื่อรักษาสภาพการเป็นนักศึกษา พร้อมชำระค่าธรรมเนียมการศึกษาของภาคการศึกษานั้น ในอัตราภาคการศึกษาละ ๖,๕๐๐ บาท

ข้อ ๗ กรณีการขอลดหย่อนค่าธรรมเนียมการศึกษาแบบเหมาจ่าย ให้ประธานหลักสูตรพิจารณา ลดหย่อนค่าธรรมเนียมการศึกษาแบบเหมาจ่ายให้แก่นักศึกษา เป็นรายกรณี ในกรณีหนึ่งกรณีใดดังต่อไปนี้

๗.๑ นักศึกษาได้รับอนุมัติให้ใช้รายวิชาจากการเรียนรายวิชาผ่านโครงการรับบุคคลทั่วไป เข้าศึกษารายวิชาในระดับบัณฑิตศึกษา มหาวิทยาลัยมหิดล (Mahidol Apprenticeship Program Curriculum: MAP-C) ซึ่งเป็นโครงการที่เปิดโอกาสให้บุคคลทั่วไปที่สนใจสามารถเข้าเรียนรายวิชาในระดับบัณฑิตศึกษา บางรายวิชา ร่วมกับนักศึกษาระดับบัณฑิตศึกษา เพื่อนำความรู้ไปใช้ประโยชน์ต่อการพัฒนางาน สามารถสะสมหน่วยกิต และนำผลการศึกษารายวิชามาใช้เมื่อเข้ามาเป็นนักศึกษาในหลักสูตรระดับบัณฑิตศึกษา มหาวิทยาลัยมหิดล

๗.๒ นักศึกษาได้รับอนุมัติให้ออนหน่วยกิต หรือเทียบโอนหน่วยกิตรายวิชา หรือใช้การเทียบเคียงผลการเรียนรู้จากการสะสมหน่วยกิตย่อย ผ่านโครงการ Microcredentials สำหรับหลักสูตรระดับบัณฑิตศึกษา มหาวิทยาลัยมหิดล ซึ่งเป็นโครงการที่เปิดโอกาสให้บุคคลทั่วไปเข้าเรียนในหัวข้อหรือเนื้อหาวิชา บางส่วน เข้ารับการอบรมหรือเรียนรู้จากแหล่งต่าง ๆ ที่หลักสูตรกำหนด โดยสามารถสะสมเป็นหน่วยกิตย่อยจากหัวข้อที่เรียน เพื่อนำผลการศึกษามาเทียบเคียงกับผลการเรียนรู้ในหัวข้อหรือรายวิชาของหลักสูตร เมื่อเข้ามาเป็นนักศึกษาในหลักสูตรระดับบัณฑิตศึกษา มหาวิทยาลัยมหิดล

ทั้งนี้ ค่าธรรมเนียมการศึกษาแบบเหมาจ่ายหลังการลดหย่อนต้องไม่ต่ำกว่าภาคการศึกษาละ ๖,๕๐๐ บาท

ข้อ ๘ อัตราค่าธรรมเนียมการศึกษาแบบเหมาจ่ายและอัตราค่าธรรมเนียมอื่น ให้เป็นไปตามบัญชีท้ายประกาศนี้

ทั้งนี้ สำหรับนักศึกษาที่เข้าศึกษาตั้งแต่ปีการศึกษา ๒๕๖๗ เป็นต้นไป

ประกาศ ณ วันที่ ๑๑ มีนาคม พ.ศ. ๒๕๖๗

(ศาสตราจารย์ นายแพทย์บรรจง มไหสวริยะ)

อธิการบดีมหาวิทยาลัยมหิดล

บัญชีอัตราค่าธรรมเนียมการศึกษาแบบเหมาจ่าย และอัตราค่าธรรมเนียมอื่น ระดับบัณฑิตศึกษา มหาวิทยาลัยมหิดล

แนบท้ายประกาศมหาวิทยาลัยมหิดล เรื่อง อัตราค่าธรรมเนียมการศึกษาแบบเหมาจ่ายระดับบัณฑิตศึกษา

สำหรับนักศึกษาที่เข้าศึกษาตั้งแต่ปีการศึกษา ๒๕๖๗ เป็นต้นไป พ.ศ. ๒๕๖๗

ลงวันที่ ๑๑ มีนาคม พ.ศ. ๒๕๖๗

ลำดับ	ส่วนงาน/หลักสูตร/สาขาวิชา	อัตราค่าธรรมเนียมเหมาจ่ายฯ ชำระต่อภาคการศึกษา (บาท)		อัตราค่าธรรมเนียมอื่น ชำระตลอดหลักสูตร (บาท)	
		นักศึกษา สัญชาติไทย	นักศึกษา ต่างสัญชาติ	ค่าวิจัยและ/หรือ ค่าอุปกรณ์พิเศษ	ค่าธรรมเนียม การศึกษาดูงาน
6	โครงการร่วม คณะแพทยศาสตร์โรงพยาบาลรามาธิบดี และคณะพยาบาลศาสตร์				
6.1	หลักสูตรปรัชญาดุษฎีบัณฑิต สาขาวิชาพยาบาลศาสตร์ (หลักสูตรนานาชาติ) สำหรับผู้เรียน แบบ 1.1	60,000	60,000	300,000	-
	หลักสูตรปรัชญาดุษฎีบัณฑิต สาขาวิชาพยาบาลศาสตร์ (หลักสูตรนานาชาติ) สำหรับผู้เรียน แบบ 2.1	70,000	70,000	300,000	-

Translation



Announcement of Mahidol University

Subject: Fixed-Rate Tuition Fees for Postgraduate Studies For Students Enrolling Academic Year B.E. 2567 (2024) Onwards B.E. 2567 (2024)

.....

To ensure the seamless processing of course registration and tuition fee payments for postgraduate studies at Mahidol University, by virtue of Article 11 of Mahidol University's Regulations on Budget Management and Finance B.E. 2551, as well as subsequent amendments, and in alignment with resolutions adopted by the University's Tuition Fees Committee Meetings (1/2567) held on September 29, B.E. 2566, and (2/2567) held on December 8, B.E. 2566, the President hereby establishes the criteria and rates for collecting fixed-rate tuition fees for postgraduate studies at Mahidol University as follows:

1: This announcement shall apply to the collection of fixed-rate tuition fees for postgraduate studies at Mahidol University. It is effective for students enrolling from the academic year B.E. 2567 (2024) onwards, except for programs offered by the College of Management, programs offered by Mahidol University International College, the Higher Graduate Diploma programs in Clinical Medical Sciences offered by Faculty of Medicine Siriraj Hospital, Faculty of Medicine Ramathibodi Hospital, Pra Mongkutklao College of Medicine, and programs offered by the scientific research institutes, under the supervision of the Ministry of Higher Education Science Research and Innovation (Institute affiliated with Mahidol University).

2: Fixed-rate tuition fees for regular semester (first and second semesters) shall apply to students who register for courses or attend the defense examinations of thesis, thematic paper, or independent study during the regular semester, subject to the following conditions:

2.1 In case of study within the duration specified in the curriculum study plan of the program, tuition fees shall be charged based on the fixed-rate tuition fees of each program for every regular semester until the completion of the curriculum study plan.

2.2 In case of study exceeding the duration specified in the curriculum study plan but still within the maximum study period of the program, and the students have not yet passed their thesis, thematic paper, or independent study, the following shall apply:

(2.2.1) Registration for thesis, thematic paper, or independent study, whether without course or with course to fulfil the curriculum requirements, shall be charged at a rate of 10,000 THB per semester. This fee shall be collected for every regular semester

until the semester in which the student “passes” their thesis, thematic paper, or independent study, or until exceeding the maximum duration of the program, whichever occurs first.

(2.2.2) Registration for additional courses apart from the study plan, as well as additional courses after completing all required courses of the curriculum structure, regardless of whether a thesis, thematic paper, or independent study is registered, shall be charged based on the fixed-rate tuition fees of each program for every regular semester. This fee shall be collected until the semester in which the student “passes” their thesis, thematic paper, or independent study, or until exceeding the maximum duration of the program, whichever occurs first.

2.3 In cases where students have been approved to study beyond the maximum duration of the program, the fixed-rate tuition fees of each program shall be charged for every regular semester until the semester in which the student "passes" their thesis, thematic paper, or independent study.

2.4 In cases where students have completed all required courses according to the curriculum structure of the program and have passed their thesis, thematic paper, or independent study, but are in the process of publication for graduation, a fee of 6,500 THB per semester shall be charged. This fee shall be collected for every regular semester until the semester in which the Faculty of Graduate Studies nominates the student's candidacy to the Mahidol University Council for approval of graduation.

3. Fixed-rate tuition fees for summer semester shall apply to students who register for courses, or attend the defense examination of thesis, thematic paper, or independent study during the summer semester, subject to the following conditions:

3.1 In case of study within the duration specified in the curriculum study plan of the program, tuition fees shall be charged at a rate of fifty percent (50%) of the fixed-rate tuition fees of each program.

3.2 In case of study exceeding the duration specified in the curriculum study plan but still within the maximum study period of the program, and the student has not yet passed their thesis, thematic paper, or independent study, the following shall apply:

(3.2.1) Registration for thesis, thematic paper, or independent study, whether without course or with course to fulfil the curriculum requirements, shall be charged at a rate of 10,000 THB per semester.

(3.2.2) Registration for additional courses apart from the study plan, as well as additional courses after completing all required courses of the curriculum structure, regardless of whether a thesis, thematic paper, or independent study is registered, shall be charged at a rate of fifty percent (50%) of the fixed-rate tuition fees of each program.

3.3 In cases where students have been approved to study beyond the maximum duration of the program, the tuition fees shall be charged at a rate of fifty percent (50%) of the fixed-rate tuition fees of each program.

3.4 In the case of new students required by the program to register for course in the summer semester (before the start of the first semester), the tuition fees shall be charged at a rate of fifty percent (50%) of the fixed-rate tuition fees of each program.

4: "Other Fees", which refers to "Research Fees and/or Equipment Fees" and "Work-Site Study Fees," shall be charged according to the rates specified by each program. Additionally, the program director may consider providing installment payment options, reductions, or waivers for these fees in accordance with the following criteria:

4.1 In cases where students are unable to pay these fees in full amount at once, the program director may consider approving installment payment on a case-by-case basis.

4.2 In cases where students do not receive any scholarships from any sources, or if they receive a scholarship amount that is insufficient to cover these fees, the program director may consider approving reductions or waivers on a case-by-case basis.

5: "Health Insurance Fee" for foreign students shall be charged annually at 3,500 THB until the academic year in which the Faculty of Graduate Studies nominates the student's candidacy to the Mahidol University Council for approval of graduation.

6: In cases where students have been approved for voluntary suspension of study during any academic semester, they shall be required to pay the fee according to the announcement of the Faculty of Graduate Studies, Mahidol University, regarding other expenses for postgraduate students. Additionally, they must also register to maintain the student status and pay the tuition fee for that semester at a rate of 6,500 THB per semester.

7: Regarding reductions of fixed-rate tuition fees, the program director may consider granting such reductions to students on a case-by-case basis under the following circumstances:

7.1 Students who have been approved to take courses from the Mahidol Apprenticeship Program Curriculum (MAP-C), which allows the general public to study specific postgraduate-level courses alongside other postgraduate students, and are able to accumulate credits and utilize the outcomes of these courses upon admission to postgraduate programs at Mahidol University.

7.2 Students who have been approved to transfer credits, credit equivalencies, or accumulate credits through the Microcredentials program for postgraduate-level courses at Mahidol University, which allow the general public to study specific topics or content areas, participate in training, or learn from various sources as designated by the program, are able to accumulate micro-credits from the topics they have studied, which are equivalent to the learning outcomes of specific topics or courses in the curriculum upon admission to postgraduate programs at Mahidol University.

However, the fixed-rate tuition fees after the reductions must not be less than 6,500 THB per semester.

Item 8: The fixed-rate tuition fees and other fees of each program shall adhere to the list attached herewith this announcement.

This announcement shall be effective for students enrolling from the academic year B.E 2567 (2024) onwards.

Announced Date: 11th March 2024

(Professor Banchong Mahaisavariya, M.D.)
President of Mahidol University

Fixed-Rate Tuition Fees and Other Fees for Postgraduate Studies, Mahidol University
Attachment of the Announcement of Mahidol University, Subject: Fixed-Rate Tuition Fees for Postgraduate Studies
For Students Enrolling Academic Year B.E. 2567 (2024) Onwards, B.E. 2567 (2024)
Announced Date: 11th March 2024

No.	Faculty / Program / Major (EN)	"Fixed-Rate Tuition Fess" paid for each semester (THB)		"Other Fees" paid for the whole program (THB)	
		Thai Students	Foreign Students	Research Fees and/or Equipment Fees	Work-Site Study Fees
6	Faculty of Medicine Ramathibodi Hospital and Faculty of Nursing				
6.1	Doctor of Philosophy Program in Nursing (International Program) (for student plan 1.1)	60,000	60,000	300,000	-
	Doctor of Philosophy Program in Nursing (International Program) (for student plan 2.1)	70,000	70,000	300,000	-